



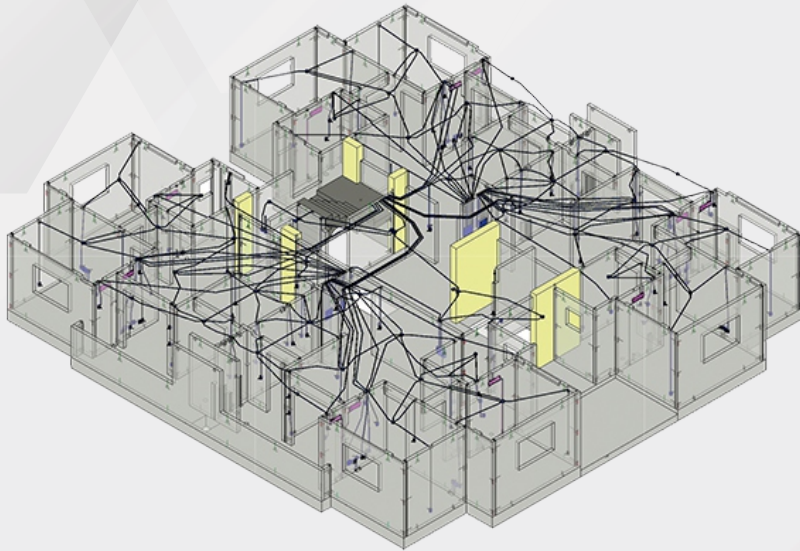
**BR Tech**®  
HOUSING SYSTEM

A solução industrializada para a  
construção civil - menor custo e menor prazo!

# O SISTEMA

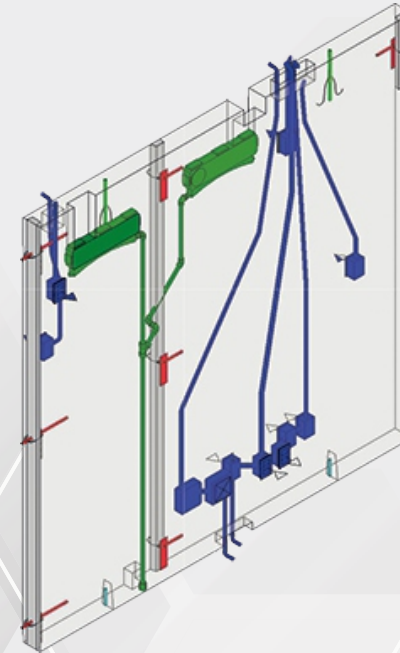
Tecnologia europeia na América do Sul

As construções utilizam tecnologia de painéis maciços de concreto já muito difundida na Europa e que a **Brtech** utiliza para executar projetos residenciais de várias metragens, atendendo as necessidades do mercado

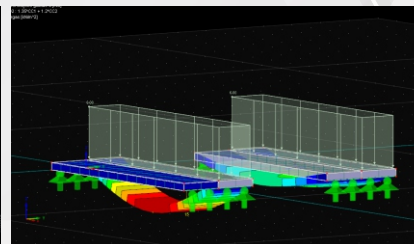
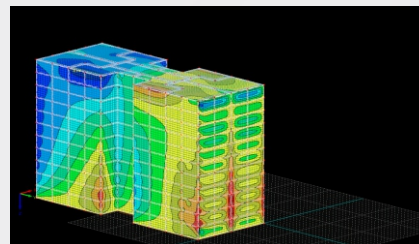
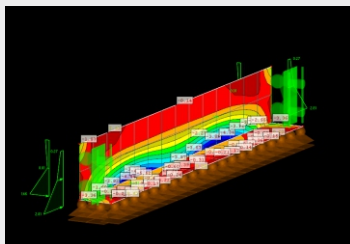


brasileiro. São diversos modelos padronizados a sua escolha com projetos de alto padrão arquitetônico, qualidade, segurança e requinte, a um custo relativamente mais baixo que as construções tradicionais.

As partes da casa são produzidas em fábrica, com tecnologia de ponta necessária para obtenção de uma obra sólida e de execução rápida.



**Projetos  
em BIM**





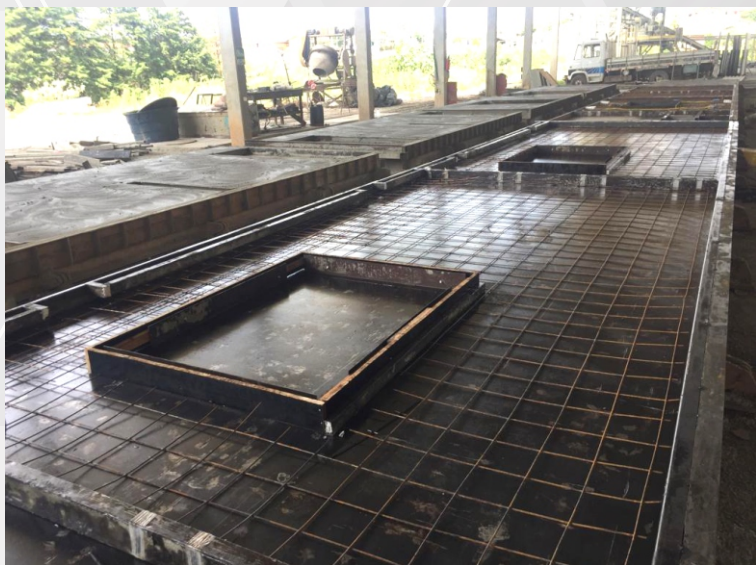
# VANTAGENS DO SISTEMA

- Aumento da área útil em relação a espessura da parede;
  - O painel é estrutura e vedação ao mesmo tempo;
  - Não necessita reboco interno, por fora somente pintura;
  - Montagem rápida e limpa. Uma casa de 100,00m<sup>2</sup> é montada em um dia. Monta-se mais com redução de prazos de execução e se “Tempo é dinheiro”, este é o maior benefício. Lucro dividido em 2 anos é dobrado se a execução durar apenas 1 ano;
  - Menor custo final (25% menos em média);
  - Controle dos procedimentos em fábrica;
  - Alta produtividade;
- 
- Viabilidade de execução em áreas menos estruturadas, uma vez que não depende de mão de obra local;
  - Possibilidade do emprego de revestimentos como cerâmica, texturas entre outras já na concretagem em fábrica;
  - Confiabilidade e alto controle tecnológico com garantia, segurança e desempenho;
  - Sistemas mecanizados de produção e montagem;
  - Menor dependência de mão de obra específica de construção;
  - Valor de desperdício de obra perto de 0%;
  - Procedimentos internacionais testados há mais de 50 anos;
  - Atende as normas de conforto ambiental e estrutural;
  - Possui norma NBR do sistema com aceitação.



# FABRICAÇÃO

Fabricação para atender qualquer demanda, em qualquer país. Podendo ser executado no próprio canteiro de obra, dependendo do volume de obra.



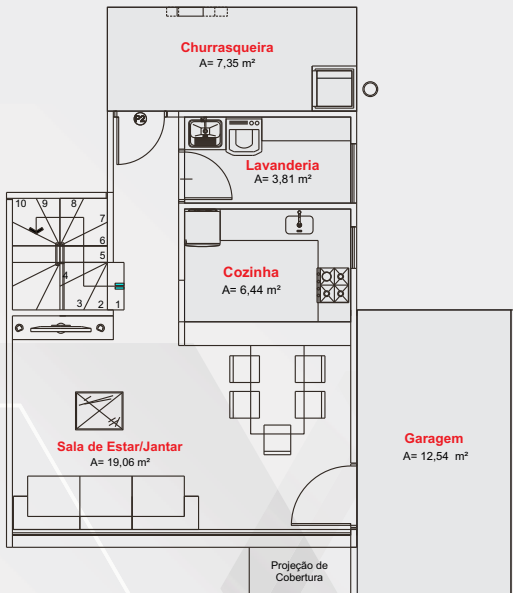


# EXEMPLOS DE OBRAS



# **MODELOS**

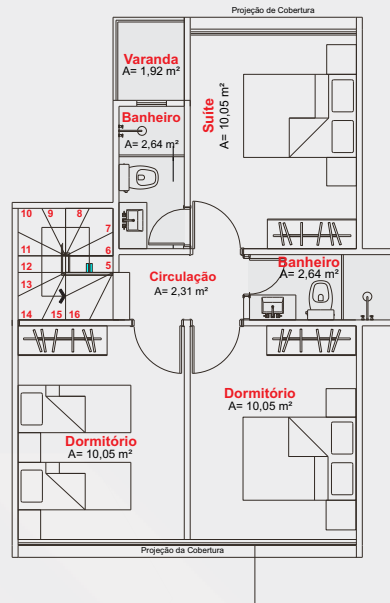




**Planta Baixa**

Área = 61,43m<sup>2</sup>

Área Total = 110,06m<sup>2</sup>

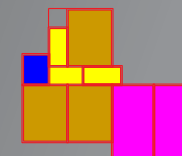
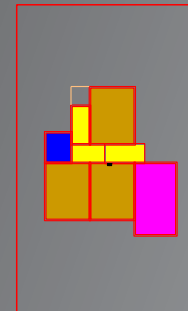


**Planta Baixa Térreo**

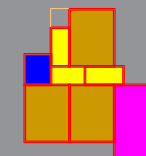
Área = 49,17m<sup>2</sup>



LOTE 12 x 30 m



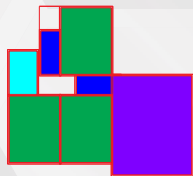
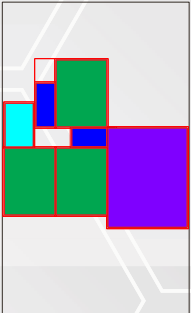
A=123,02 m<sup>2</sup>



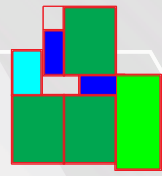
A=110,06 m<sup>2</sup>



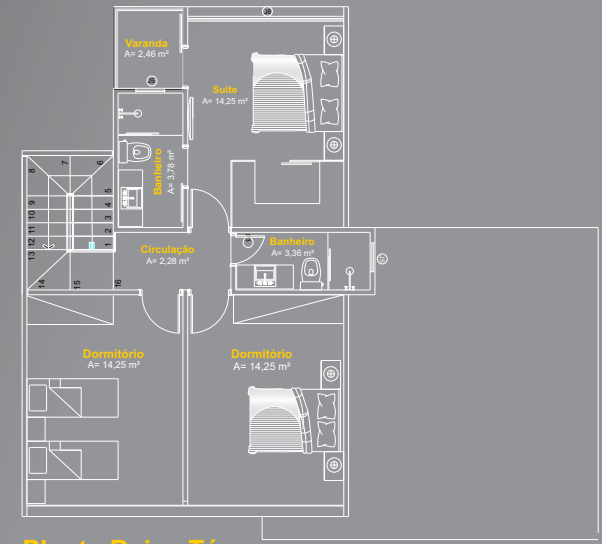
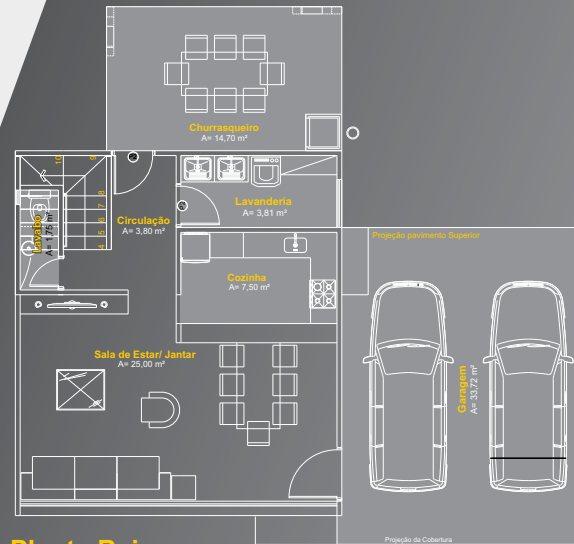
LOTE 12 x 30 m



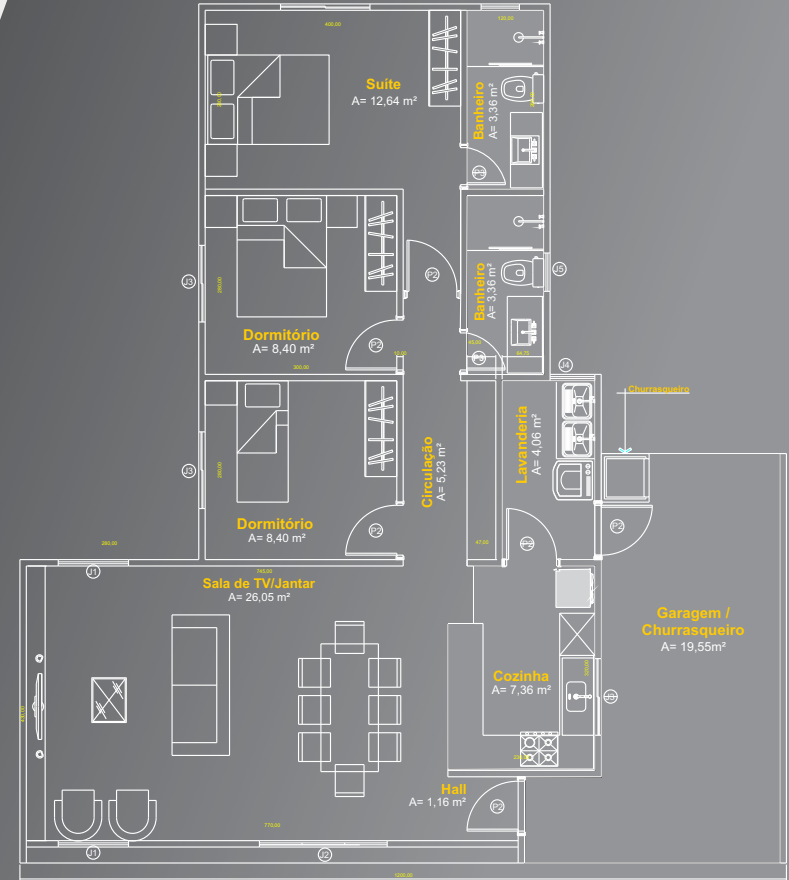
A=168,90 m<sup>2</sup>



A=150,82 m<sup>2</sup>

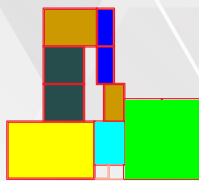
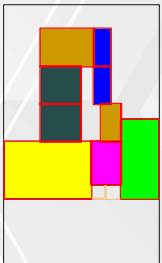




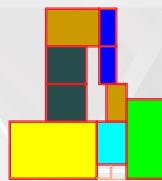


**Planta Baixa**  
A= 110,38 m<sup>2</sup>

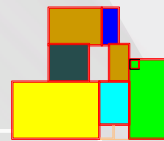
LOTE 12 x 30 m



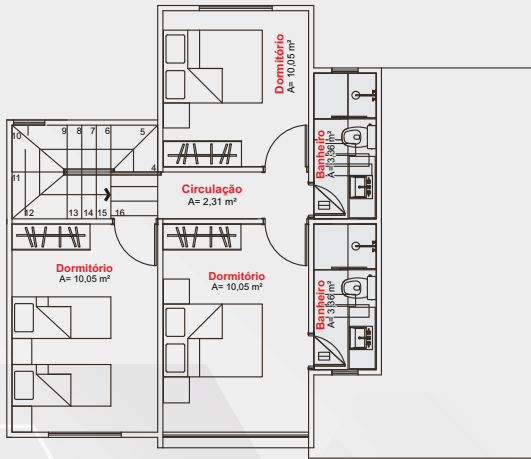
A=118,03 m<sup>2</sup>



A=110,38 m<sup>2</sup>

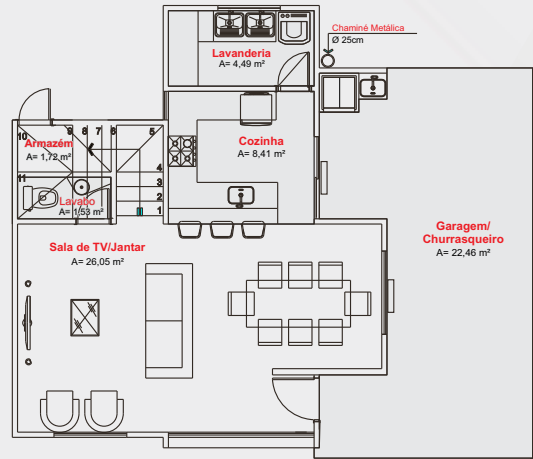


A=95,03 m<sup>2</sup>



**Planta Baixa Térreo**

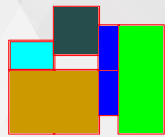
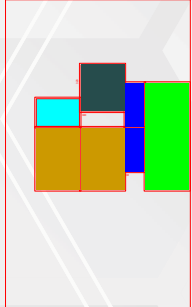
Área = 50,87 m<sup>2</sup>  
 Área total= 125,57 m<sup>2</sup>



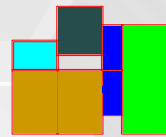
**Planta Baixa**

Área = 74,70 m<sup>2</sup>

LOTE 12 x 30 m



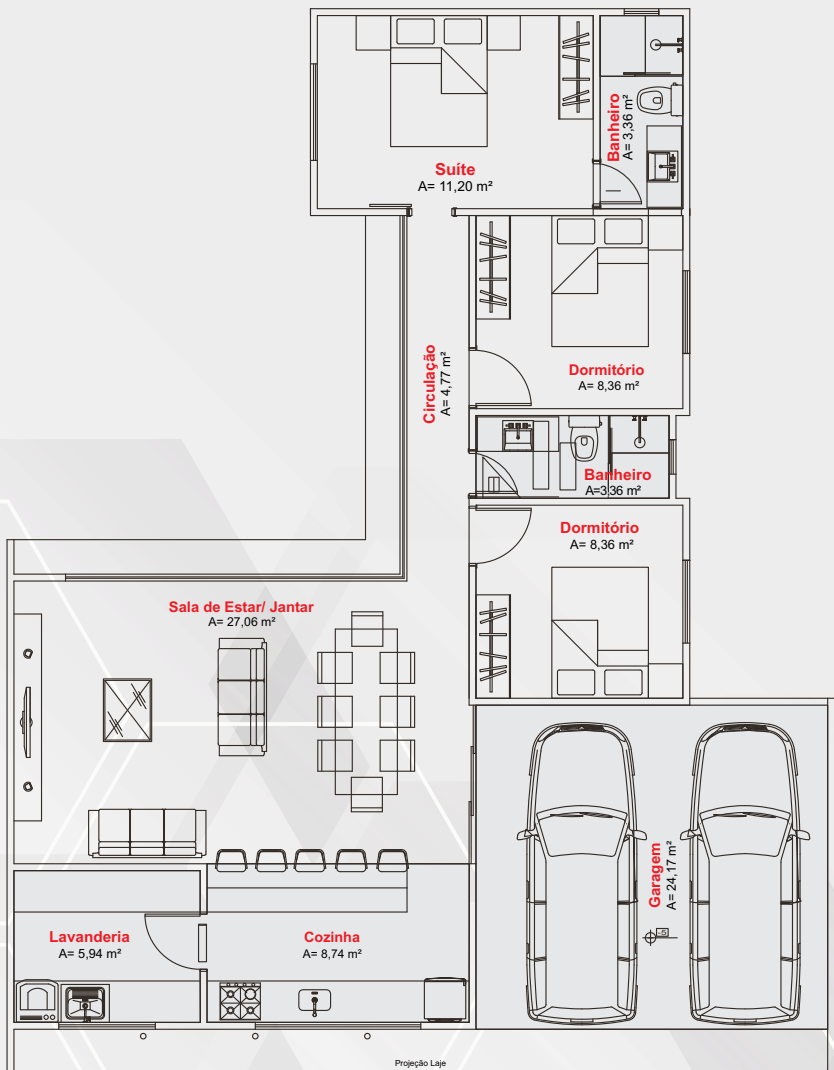
A=146,16 m<sup>2</sup>



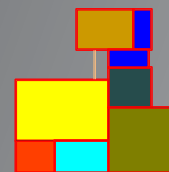
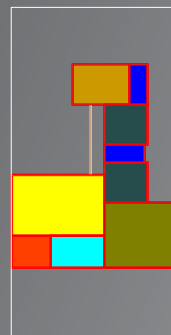
A=125,57 m<sup>2</sup>



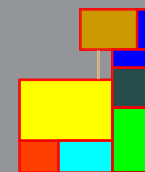




LOTE 12 x 30 m



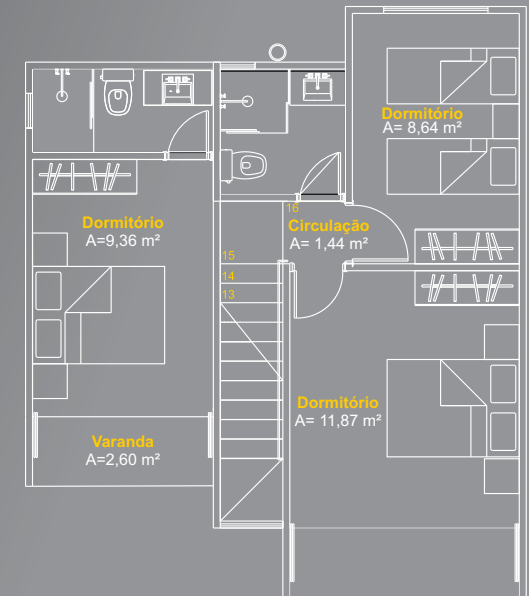
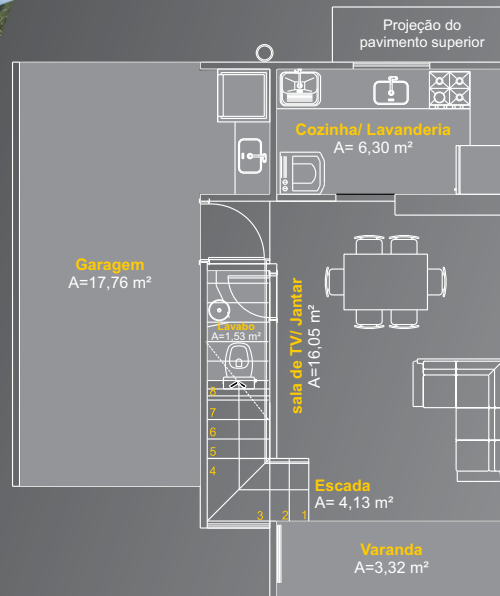
A = 102,01 m<sup>2</sup>



A = 91,46 m<sup>2</sup>

**Planta Baixa**

Área = 113,77m<sup>2</sup>



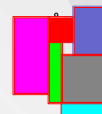
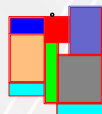
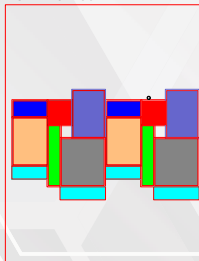
**Planta Baixa**

Área = 49,90 m<sup>2</sup>  
Área Total = 102,00 m<sup>2</sup>

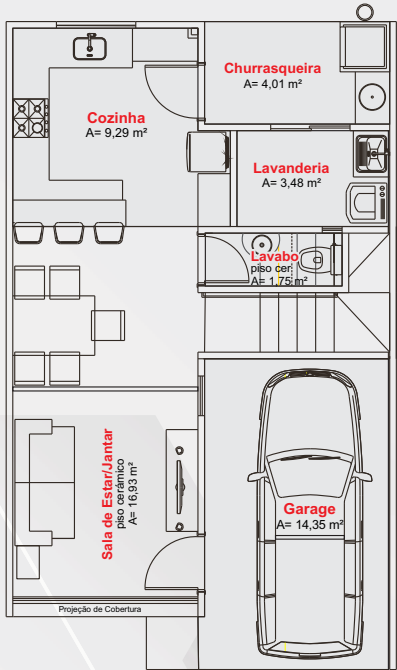
**Planta Baixa Piso**

Área = 52,10 m<sup>2</sup>  
Área Total = 102,00 m<sup>2</sup>

LOTE 15 x 30m

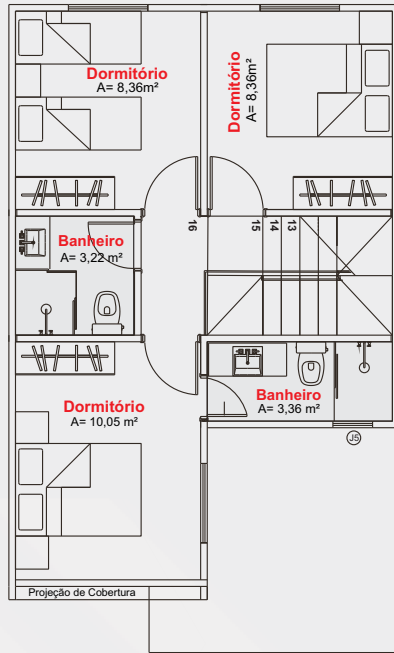






**Planta Baixa**

Área = 55,49 m<sup>2</sup>  
Área total = 101,06 m<sup>2</sup>

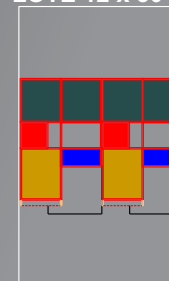


**Planta Baixa Térreo**

Área = 45,57 m<sup>2</sup>



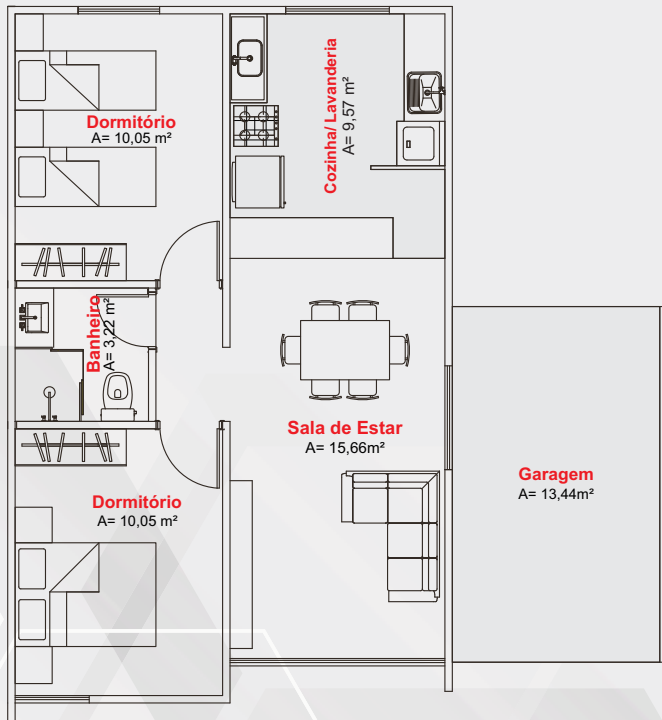
LOTE 12 x 30 m



A=101,06 m<sup>2</sup>



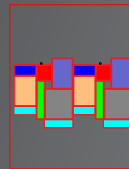
A=87,54 m<sup>2</sup>



**Planta Baixa**  
Área Total: 68,87 m<sup>2</sup>



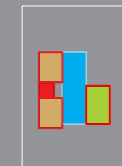
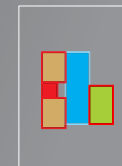
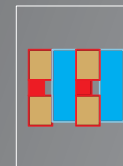
LOTE  
15 x 30 m



LOTE  
12 x 30 m

LOTE  
12 x 30 m

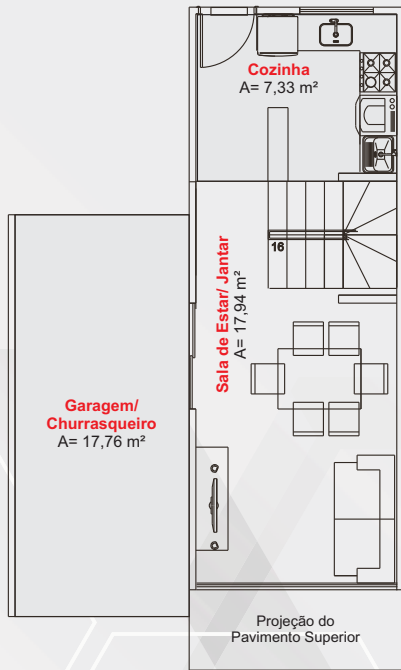
LOTE  
10 x 30 m



A=68,87 m<sup>2</sup>

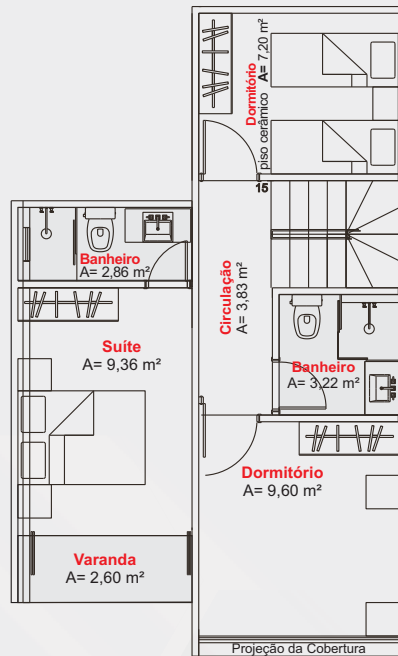
A=54,95 m<sup>2</sup>





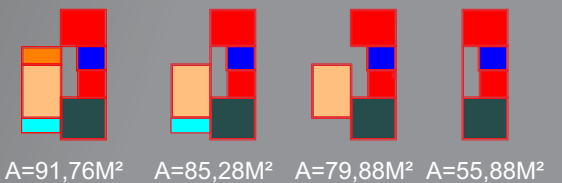
**Planta Baixa**

Área = 44,04 m<sup>2</sup>  
Área Total = 91,76 m<sup>2</sup>

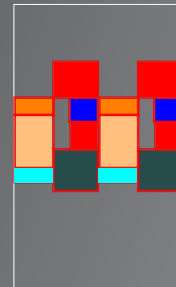


**Planta Baixa Térreo**

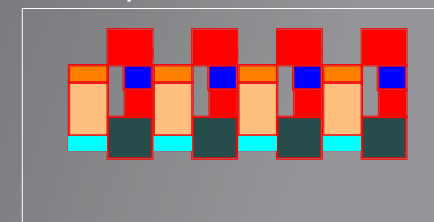
Área = 47,72 m<sup>2</sup>



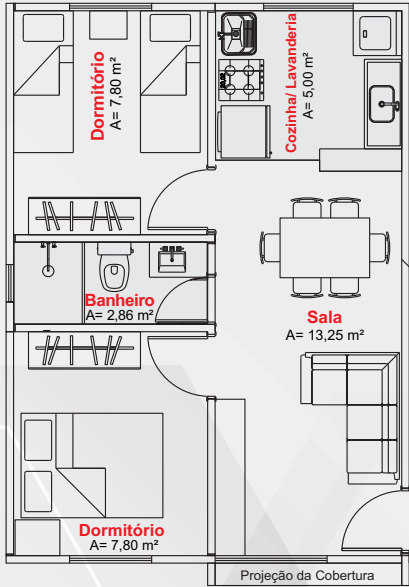
LOTE 12 x 30m



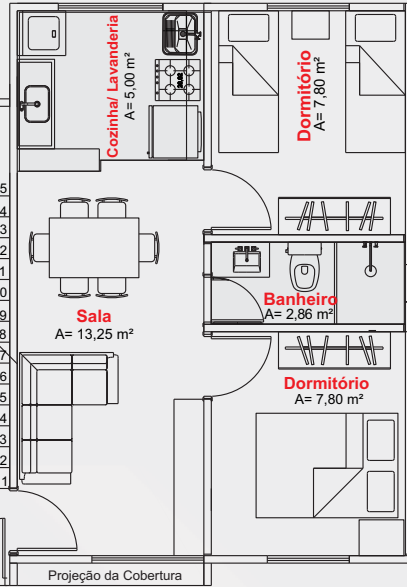
LOTE esquina 15 x 30m



**CASA 01**



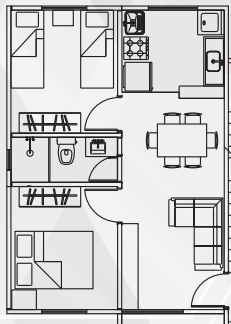
**CASA 02**



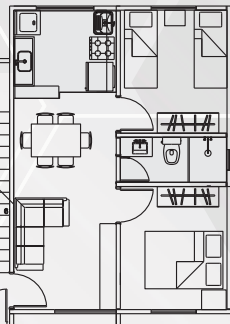
## Planta Baixa

Área Total = 45,54 m<sup>2</sup>

**CASA 03**



**CASA 04**

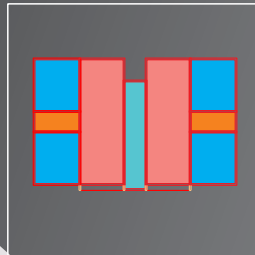


## Térreo

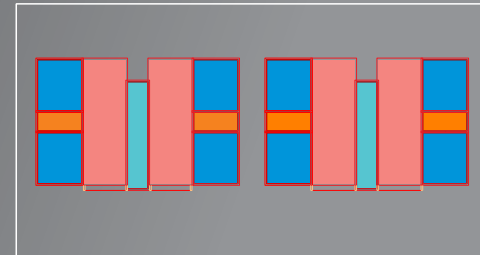
Área Total = 45,54 m<sup>2</sup>



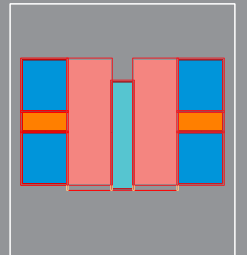
**LOTE 15 x 30 m**



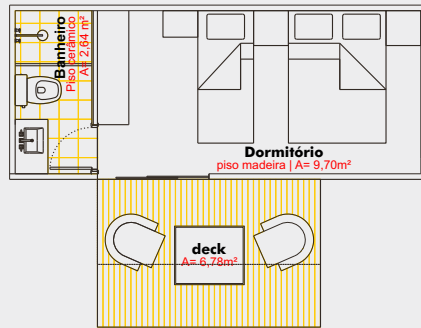
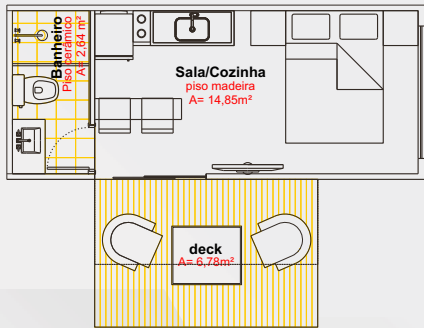
**LOTE 15 x 30 m**



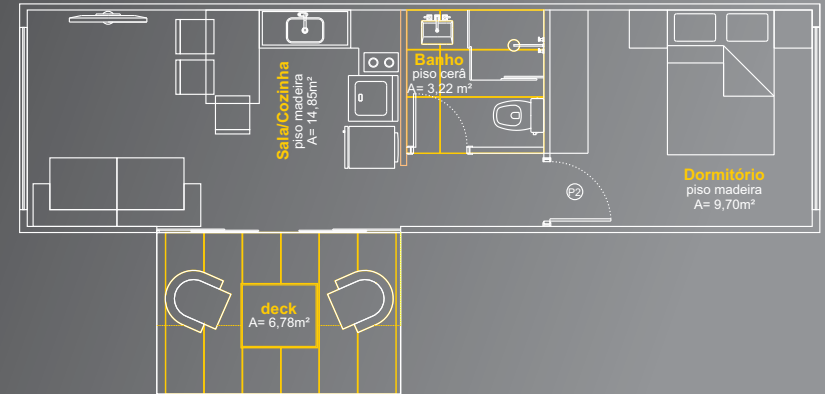
**LOTE 12 x 30 m**





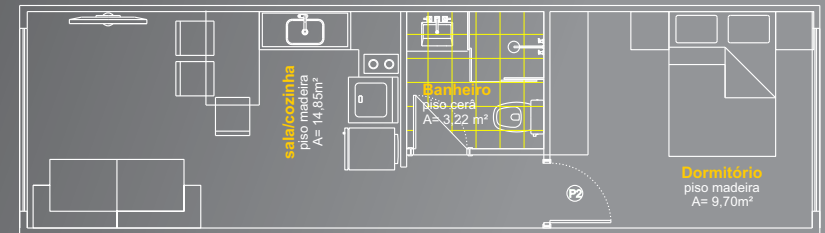


**Planta Baixa**  
Área = 21,78m<sup>2</sup>



**Planta Baixa Térreo**

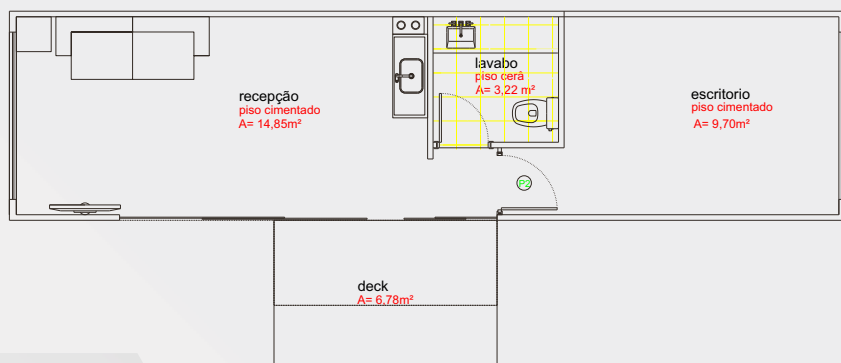
Área = 38,28m<sup>2</sup>  
ESC: 1/50



**Planta Baixa Térreo**

Área = 38,28m<sup>2</sup>  
ESC: 1/50





**Planta Baixa Térreo**

Área = 42,78m<sup>2</sup>



**Planta Baixa Térreo**

Área = 24,78m<sup>2</sup>







**BRTech**<sup>®</sup>  
HOUSING SYSTEM



# CONTATOS

## Curitiba - PR

BR 376, n 3661 (Rodovia do Café) Parque Damasco - Orleans

## Balneário Camboriu - SC

3a. Avenida nº 1145 - Edifício Office 2300 - Sala 31 - Centro

## Canoinhas - SC

Rua 12 de setembro , 944 - sl 01 - Centro



(47) 9 8900 5707



gasda@brtechind.com

